

# June 2011 Employment Data

## Month over Month Employment

### Unemployment

- Wyoming's unemployment rate fell in June from 6.0% to 5.9%.
- The U.S. unemployment rate increased in June from 9.1% to 9.2%.

### Total Employment

- Total employment increased by 9,700 jobs in June.

### Employment by Industry

- The month over month increases were in:
  - Leisure & Hospitality (5,800 jobs, 18.2%)
  - Professional & Business Services (1,400 jobs, 7.9%)
  - Retail Trade (900 jobs, 3.1%)
  - Natural Resources & Mining (800 jobs, 3.0%)
  - Construction (500 jobs, 2.1%)
  - Transportation & Utilities (300 jobs, 2.1%)
  - Education & Health Services (300 jobs, 1.1%)
  - Other Services (200 jobs, 1.8%)
  - Wholesale Trade (100 jobs, 1.2%)
  - Manufacturing (100 jobs, 1.1%)
- Government fell by 700 jobs, a decline of 0.9%

---

## Year over Year Employment

- In June, Wyoming outperformed the national economy (% change).

### Total Employment

- Since June 2010, total employment in Wyoming has grown by 6,900 jobs or 2.4%. The U.S. has increased by 1,243,000 jobs over the same period.
- Wyoming's annual employment growth of 2.4% (June 2011 over June 2010) rose from #4 to #2 in June.
- Other Mountain states posted growth/decline in June as follows:
  - Utah +2.0%
  - Montana +1.9%
  - Idaho +1.0%
  - Colorado +0.6%
  - Arizona +0.3%
  - New Mexico +0.3%
  - Nevada - 0.3%

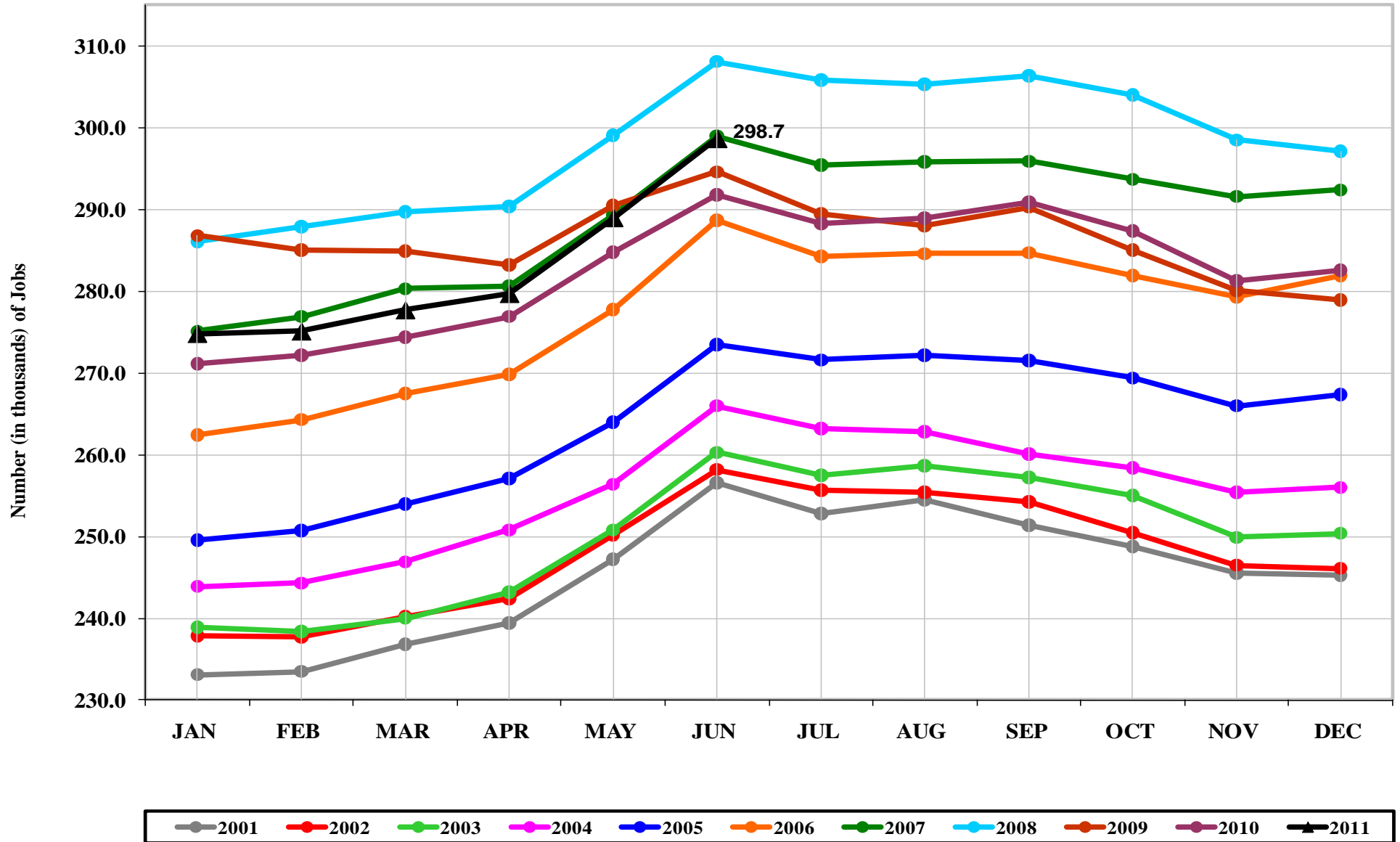
## Employment by Industry

- Year over year increases by industry include:
  - Natural Resources & Mining (2,900 jobs, 11.6%)
  - Professional & Business Services (1,300 jobs, 7.3%)
  - Leisure & Hospitality (1,100 jobs, 3.0%)
  - Construction (900 jobs, 3.9%)
  - Transportation & Utilities (800 jobs, 5.8%)
  - Education & Health Services (400 jobs, 1.5%)
  - Manufacturing (300 jobs, 3.5%)
    - ✚ The U.S. has experienced a 1.6% increase in jobs since June 2010.
  - Wholesale Trade (200 jobs, 2.4%)
  - Financial Activities (100 jobs, 0.9%)
  
- Employment has fallen in three industries since June 2010
  - Retail Trade (-800 jobs, -2.6%)
  - Government (-200 jobs, -0.3%)
  - Information (-100 jobs, -2.5%)

---

*Sources: Wyoming Department of Labor, Research & Planning  
U.S. Department of Labor, Bureau of Labor Statistics*

# Wyoming Total Employment (Jan 2001 - June 2011)



Source: U.S. Department of Labor, Bureau of Labor Statistics